



64 Beach Farm Arbor Lane
Pakefield, Lowestoft, NR33 7BD

Asking Price £130,000



64 Beach Farm Arbor

Pakefield, Lowestoft, NR33 7BD

Aldreds are delighted to offer this double fronted fully residential mobile home situated on the very desirable Beach Farm Residential Park in Pakefield being within a very short walk of East Pakefield beach. The property is presented to an outstanding standard throughout with spacious accommodation including an entrance hall, open plan lounge/diner, modern fitted kitchen, modern fitted shower room and two double bedrooms. There are also wraparound gardens and ample off road parking. Benefits also include uPVC double glazed windows and gas fired central heating. This is a fully residential property and can be lived in all year round with realistic site fees which include all water and sewerage charges. An early viewing is strongly recommended.

'L' Shaped Entrance Hall

Fitted carpet, coved ceiling, uPVC entrance door, radiator, power point.

'L' Shaped Lounge/Diner 14'5" x 19'7" (4.40 x 5.98)

Fitted carpet, coved ceiling, triple aspect uPVC windows, radiator, power points, tv point, modern timber fireplace with marble effect inset and hearth with living flame electric fire, ample space for family size dining table and chairs.

Kitchen

9'10" x 11'2" (3.02 x 3.41)

Tile effect vinyl flooring, a full range of modern fitted kitchen units with extended work surfaces, tiled splashbacks, poly-carbonate sink with single drainer, recess for white goods including plumbing for a washing machine, two full length storage/larder cupboards, one housing the modern energy efficient combination boiler (fitted in 2021), integrated electric oven with matching four burner gas hob, extraction cooker hood, uPVC window, uPVC door leading to garden, radiator, power points.





Shower Room

Vinyl flooring, modern shower suite comprising of a double length shower cubicle with Aquaboard splashbacks, low level WC, pedestal sink, shavers socket & shavers light, uPVC window, extractor fan, radiator.

Bedroom 1

11'2" x 9'7" (3.42 x 2.94)

Fitted carpet, coved ceiling, uPVC window, radiator, a range of fitted wardrobes, dressing table & drawers, radiator, power points.

Bedroom 2

8'4" x 9'7" (2.55 x 2.93)

Fitted carpet, radiator, power points, tv point, a full range of fitted wardrobes, dressing table & drawers.

Outside

A range of well presented wrap around gardens, ample off road parking for up to 3 cars including a side driveway & parking to the front.

Site Fees And Terms

Fully Residential So Can Be Used As Your Main Address

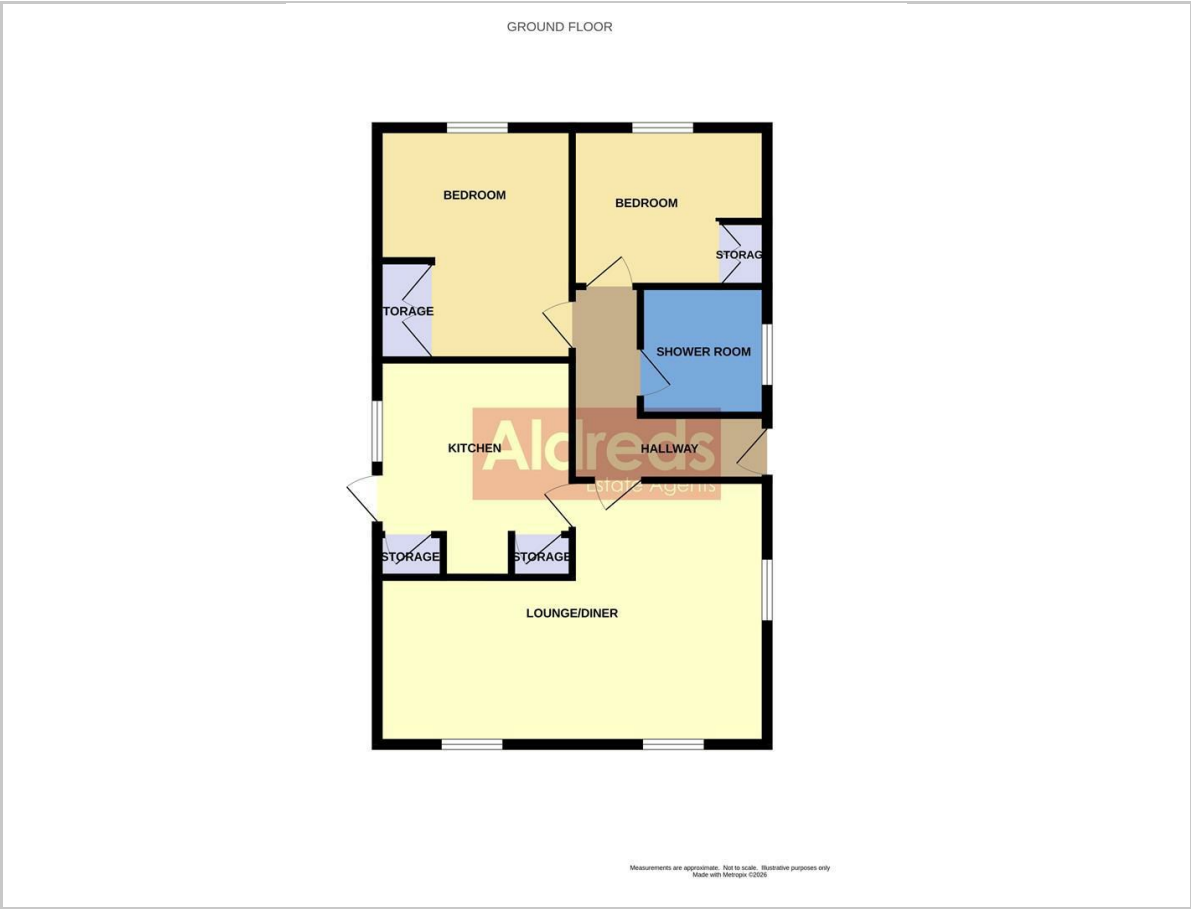
Over 55s Only

Council Tax Band A

Site Fee £213 Per Month To Include Water And Drainage (Approx.)



Floor Plan



Viewing

Please contact our Aldreds Lowestoft Office on 01502 565432 if you wish to arrange a viewing appointment for this property or require further information.

Disclaimer
These particulars are issued on an understanding that all negotiations shall be conducted through Messrs. Aldreds. Please note: Messrs. Aldreds for themselves and for the vendors or lessors of this property whose agents they are given notice that: 1. Particulars are set out as a general outline only for guidance of intending purchasers or lessees, and do not constitute nor constitute part of, an offer or contract. 2. All descriptions, dimensions, references to condition and necessary permissions for use and occupation, and other details are given without responsibility and any intending purchasers or tenants should not rely on them as statements or representations of fact but must satisfy themselves by inspection or otherwise as to the correctness of each of them. 3. No person in the employment of Messrs. Aldreds has any authority to make or give any representation or warranty whatever in relation to this property. 4. If you are proposing to visit the property and are travelling some distance please check with Aldreds on the issue of availability prior to travelling. 5. Aldreds Property Consultants and associated services may offer additional services to the prospective purchaser for which they will be entitled to receive a commission. Aldreds are pleased to be working with Mortgage Advice Bureau. They're an award-winning mortgage broker with over 1,400 advisers across the UK, and have access to over 12,000 mortgage products from over 90 lenders. Aldreds Estate Agents Ltd receive a commission of £200 on each completed case. Your home may be repossessed if you do not keep up repayments on your mortgage. There may be a fee for mortgage advice. The actual amount you pay will depend upon your circumstances. The fee is up to 1%, but a typical fee is 0.3% of the amount borrowed. Mortgage Advice Bureau is a trading name of Mortgage Seeker Limited which is an appointed representative of Mortgage Advice Bureau Limited and Mortgage Advice Bureau (Derby) Limited which are authorised and regulated by the Financial Conduct Authority. Mortgage Seeker Limited Registered Office: Lovewell Blake, Sixty Six North Quay, Great Yarmouth, Norfolk, NR30 1HE. Registered in England Number: 03721415. 6. Potential purchasers should check with their providers that the broadband and mobile phone coverage they would require is available.

Area Map



Energy Efficiency Graph



143 London Road North, Lowestoft, Suffolk, NR32 1NE
Tel: 01502 565432 Email: lowestoft@aldreds.co.uk <https://www.aldreds.co.uk/>
Registered in England Reg. No. 08945751 Registered Office: 17 Hall Quay, Great Yarmouth, Norfolk NR30 1HJ
Directors: Mark Duffield B.S.c. FRICS. Dan Crawley MNAEA Paul Lambert MNAEA